

WILLAMETTE VALLEY



WILLAMETTE
VALLEY WINE

From Portland to just south of Eugene, the Willamette Valley appellation stretches more than 100 miles long and 60 miles wide at its widest point. Bordered by the Coast Range Mountains to the west and the Cascade Range to the east, the valley is approximately 50 miles from the Pacific Ocean. The mild climate provided by the maritime winds gives the region a long, moderate growing season.

Region

24,436 acres of growing area

7 nested appellations

Production

69,993 tons produced (2018)

People

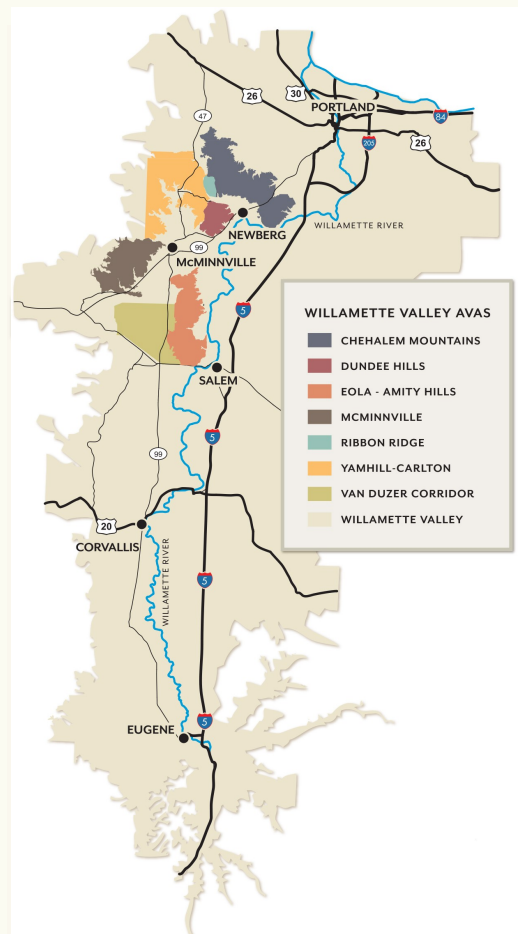
756 vineyards

592 wineries

Primary Grape Varietals

Pinot Noir | Pinot Gris | Chardonnay |

Riesling



For more information, visit www.willamettewines.com or follow @vwwines on Instagram and Twitter.

